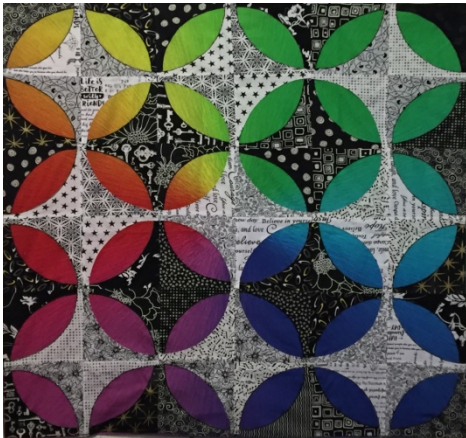


Designing With Strips and Curves

Double Vision: Curves and Circles That Create Wonderful Illusions Supply List

>> This class is most effective as a two day workshop <<



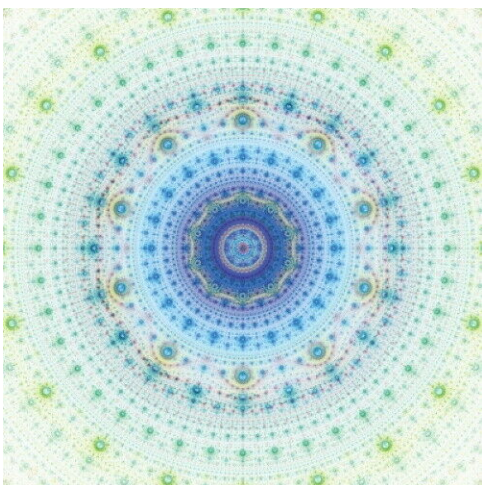
This class will give you an entirely new way to look at fabrics. It will use many layers which will create tricks to fool the eye. You can use this construction method to make many different designs – and there's no curved piecing!

This supply list is for a 36" x 36" wall hanging as pictured above:

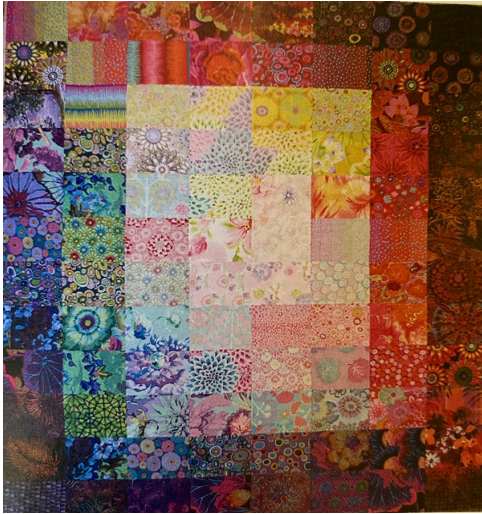
There are three layers in the quilt pictured above:

- Layer 1 - the colorful ombre fabric on the bottom
- Layer 2 - the middle layer fabrics are black with white
- Layer 3 – the top layer fabrics are white with black

☐ **Layer 1** needs to be a MINIMUM of 36½" x 36½". Here are some suggestions:



This is Moda Gradients Kaleidoscope – this piece is 57" x 57" – but wouldn't it be grand?



A pieced background. If you decide to go this route:

- **The squares must be CUT at 6½"**. You'll need a total of 36 squares (6 rows of 6).
- You'll need to piece the background **PRIOR to class**.

Hand-dyed, shibori and ombre fabrics work well with this technique



- For **layer 2**, you can use one black with white fabric (1 yard) OR 12-18 fat quarters of different black with white fabrics.
- For **layer 3**, you can use one white with black fabric (1 yard) OR 12-18 fat quarters of different white with black fabrics.

If you want your layer 1 to be larger than 42" x 42", additional fabrics for layers 2 and 3 will be

You do not have to use black & white prints for layers 2 and 3, you can use any color(s) you'd like to coordinate with the fabric you choose for layer 1.

IT IS INCREDIBLY IMPORTANT TO HEAVILY STARCH AND PRESS YOUR FABRIC BEFORE CLASS. PRESS – DON'T IRON! YOU ARE STABILIZING THE FABRIC BEFORE CUTTING.

- Note: If you choose to piece layer 1 it needs to be done before class in order for you to keep up with the others
- Sewing machine in good working order – don't forget your manual, electric cord and pedal!
- If you have a kneelift, bring it – it's very helpful
- 28mm rotary cutter with a new blade – the smaller size cuts curves sooo much better than a 45mm
- White, black and medium gray thread
- Bobbins wound with white, black and medium gray thread
- Basic sewing supplies (scissors, seam ripper, pins, extra machine needles, etc)
- Medium size cutting mat.
 - If you have a rotating cutting mat, bring that one – it makes cutting curves much easier
- 6"x12" and 12"x12" rulers
- Glue pen with a few refills
- Template plastic
- Scissors to cut template plastic
- Fine point Sharpie marker
- 505 temporary spray
- If you have a foam core or flannel covered board, bring it to use as a design wall. I will bring a few with me.
- Optional: Strips 'n Curves "On The Edge 3 + 6" template set (will be available in class for \$29.95+tax)
- Optional: Louisa Smith's book "Double Vision" if you already own it

If you have questions or need additional information, please don't hesitate to call me. I love to chat with quilters!